



WCT75

FERRARI 312T

MONACO G.P. 1975

TAMEO KITS srl

Via Valle, 111 - P.O. Box 61
17022 BORGIO VEREZZI SV ITALY
Tel. 39 019 - 615.250 Fax. 39 019 - 615.310

website www.tameokits.com

e-mail sales@tameokits.com

e-mail technical@tameokits.com

Made in Italy. Modello per collezionisti in scala 1/43.

Vietata la vendita ai minori di 14 anni.
Nocivo per ingestione. Conservare fuori dalla portata dei bambini.
Tameo Kits declina ogni responsabilità per un uso improprio del prodotto.

Made in Italy. Collector 1/43 Scale Models.

Not for sale to persons under 14 years of age.
Dangerous if swallowed. Keep out of reach of children.
Tameo Kits not held responsible for any damage or injury resulting from improper use of the product.

Made in Italy. Modèle pour collectionneurs échelle 1/43.
Vente interdite aux enfants de moins de 14 ans. Dangereux si avalé.
Conserver hors de la portée des enfants. Tameo Kits decline toute responsabilité dans le cas de dommages dérivants de l'usage non approprié du produit.

Made in Italy. Sammlermodell in Maassstab 1/43.

Verkauf an Jugendliche unter 14 Jahren verboten.

Schädlich bei Verschlucken.

Tameo Kits lehnt jede Verantwortung bei unsachgemässer Benutzung des Produktes ab.

Hecho en Italia. Colección de modelos a escala 1/43.
Prohibida la venta a menores de 14 años.
No comestible. Mantener fuera del alcance de los niños.
Tameo Kits no se hace responsable de los daños causados por el uso incorrecto de este producto.



INCOLLARE E
STUCCARE
PRIMA DELLA
VERNICIATURA
Glue and stick
before painting
Vor der lackierung
verkleben
und verspachteln
Coller et mastiquer
avant de vernir
Pegar y estucar
antes de pintar

FORARE
To Drill
Bohren
Forer
Perforar

PEZZO
Part
Stuecke
Pièce
Piezas

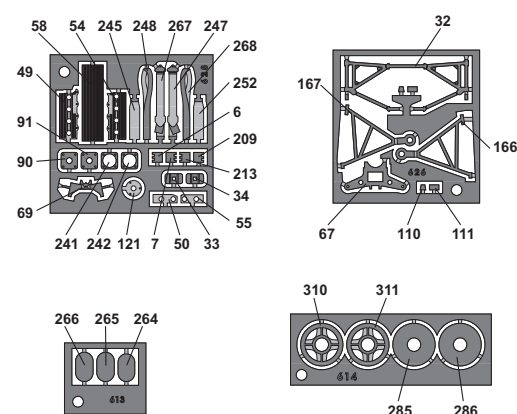
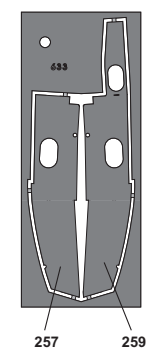
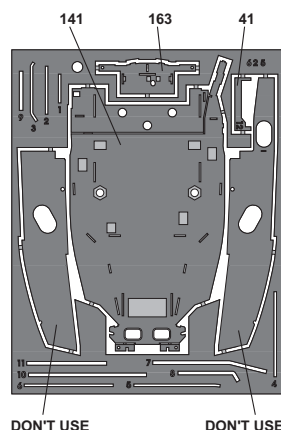
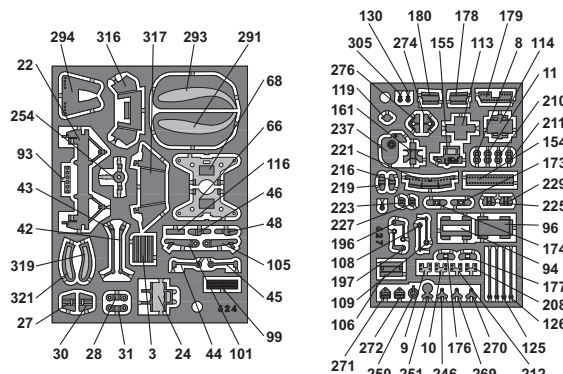
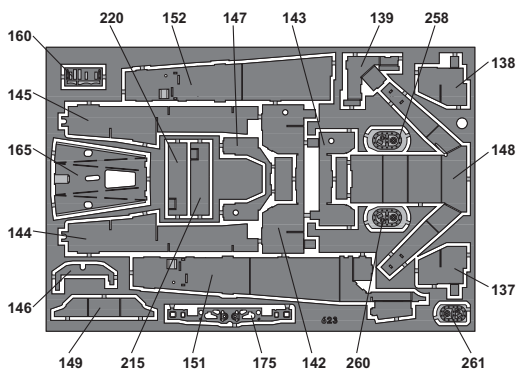
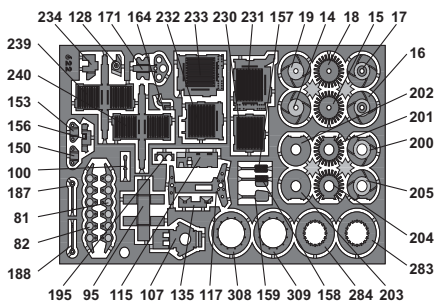
FILO D'ACCIAIO
Steel wire
Stahldraht
Fil acier
Alambre d'acero

DIAMETRO
Diameter
Durchmesser
Diamètre
Diametro

PIEGARE
To bend
Biegen
Plier
Doblar



NIKI LAUDA WORLD CHAMPION 1975



1

ORO
GOLD - OR
ORO - GOLD
TAMIYA X12

1 2

ORO

2

ORO

FORARE
DIAMETRO
0.6mm

3 4

8 ORO 9 ORO 10 ORO

7 ORO 6 ORO 5 ORO 11 ORO

SABBIA
SAND - SAND
BOIS - ARENA
HUMBROL No.121

SABBIA

NERO SEMI LUCIDO

NERO SEMI LUCIDO

12 13 14 15 16 17 18 19 20 21

22

PIEGARE

24

PIEGARE

3

NERO

22 23 24 GOLD

FORARE
DIAMETRO
0.6mm

25

NERO
BLACK - SCHWARZ
NOIR - NEGRO
TAMIYA X1

32

28 31

PIEGARE

PIEGARE

27 30

PIEGARE

PIEGARE

27 ORO 30 ORO

26 ORO 28 ORO 29 ORO 31 ORO

FORARE
DIAMETRO
0.9mm

FORARE
DIAMETRO
0.9mm

4

33 ORO 34 ORO

FORARE
DIAMETRO
0.6mm

32 NERO SEMI LUCIDO

37 NERO SEMI LUCIDO

38 NERO SEMI LUCIDO

39 40

35 36

41

44-45

PIEGARE

PIEGARE

42 43

5

FORARE
DIAMETRO
0.5mm

FORARE
DIAMETRO
0.5mm

FORARE
DIAMETRO
0.5mm

45

44

42 NERO SEMI LUCIDO

43 NERO SEMI LUCIDO

PIEGARE

46

PIEGARE

48

6

ORO

57 ORO

49 50 51 ORO 52 ORO 53 ORO 54 ORO 55 ORO 56 ORO

47 ORO 48 ORO

58 GOLD

FLAT WHITE

59 60 61 62

FLAT WHITE

FLAT WHITE

BIANCO OPACO
FLAT WHITE
MATTWEISS
BLANC OPAQUE
BLANCO MATE
TAMIYA XF2

FORARE
DIAMETRO
0.8mm

7

PARTI No. 63-65
FILO D'ACCIAIO
DIAMETRO 0.4mm

63 64 65

TO DRILL
Ø 0.6mm

8

63-65

ORO

ORO

66 67 68

9

69 ORO

FORARE DIAMETRO 0.6mm

FORARE DIAMETRO 0.5mm

70 BIANCO OPACO

71 BIANCO OPACO

72 BIANCO OPACO

73 BIANCO OPACO

BIANCO
WHITE - WEISS
BLANC - BLANCO
TAMIYA X2

DECAL

74

FORARE DIAMETRO 0.6mm

74 BIANCO

83-84-85
86-87-88

82

91

92

NERO SEMI LUCIDO

FORARE DIAMETRO 1mm

75-76-77
78-79-80

81

90

NERO SEMI LUCIDO

FORARE DIAMETRO 1mm

10

PIEGARE

81-82

96

PIEGARE

94

PIEGARE

100

PIEGARE

106

PIEGARE

107

PIEGARE

105

101

PIEGARE

95

PIEGARE

103

93

94

95

96

ALLUMINIO
ALUMINIUM - ALUMINIUM
TAMIYA XF16

97

RED LIGHT

98

WHITE

DECAL

100

FORARE DIAMETRO 0.5mm

99

ALLUMINIO

PARTE N. 103
FILO D'ACCIAIO
DIAMETRO 0.4 mm

101

102

103

104

105

SEMI GLOSS BLACK

11

106

107

FORARE DIAMETRO 0.5mm

108

109

FORARE DIAMETRO 0.5mm

117

PIEGARE

114

PIEGARE

113

PIEGARE

112

113

111

114

110

115

116

NERO SEMI LUCIDO

117

12

ARGENTO
SILVER - SILBER
ARGENT - PLATA
TAMIYA X11

121

120

FORARE DIAMETRO 0.5mm

119

ARGENTO

118

ARGENTO

NERO SEMI LUCIDO

122

PIEGARE

125

126

132-133

124

123

131-134

124

125

126

ROSSO
RED
ROT
ROUGE
ROJO

127

BIANCO

128

130

ROSSO

129

BIANCO

133

132

134

NERO SEMI LUCIDO

135

13

PIEGARE

135

PIEGARE

131

NERO SEMI LUCIDO

PARTI No. 124-131-132-133-134
FILO D'ACCIAIO
DIAMETRO 0.6mm

PIEGARE

141

PIEGARE

137

PIEGARE

138

PIEGARE

137

138

14

137

138

139

136

141

140

WCT75

